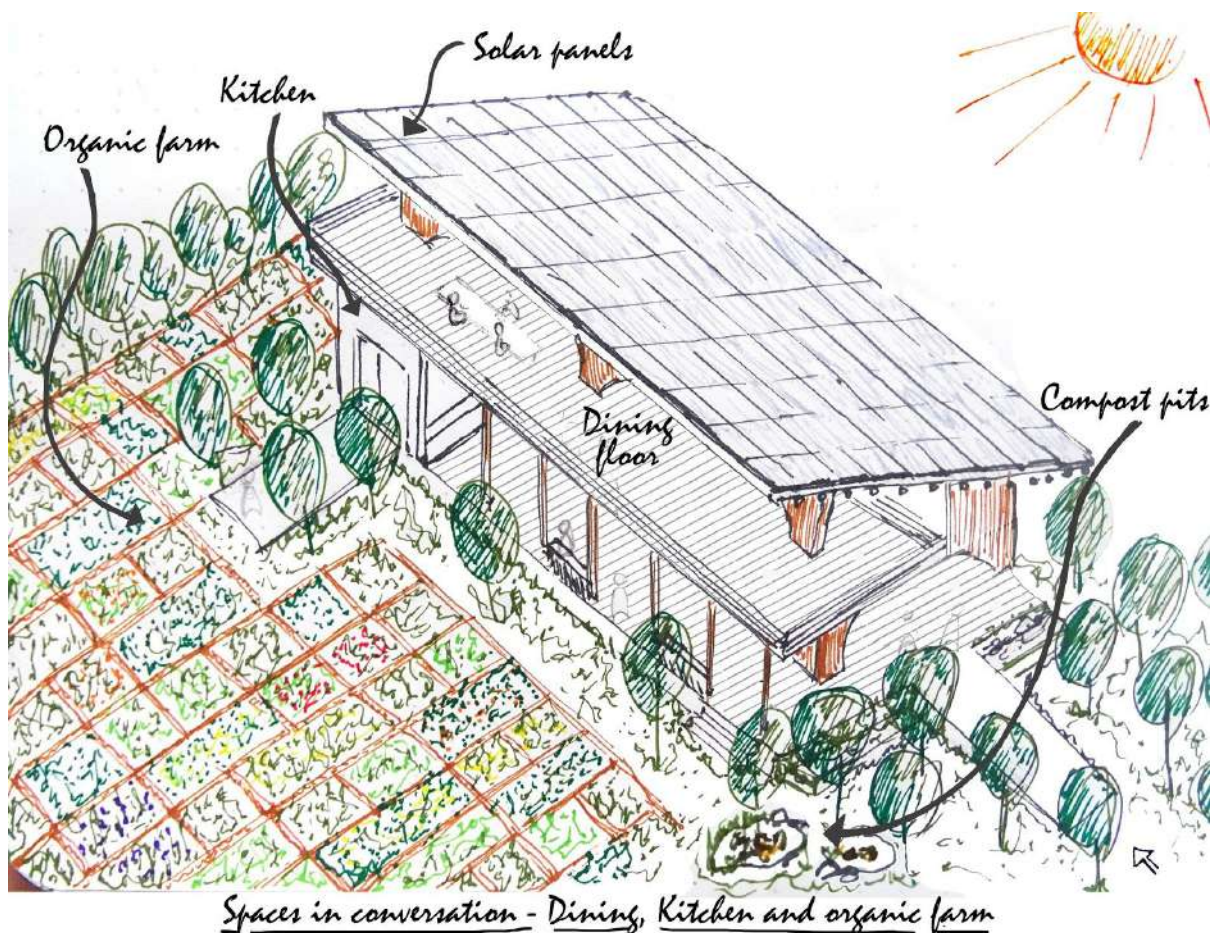


DESIGN BRIEF



Biodiversity and Interconnected web of life. eArthshala would be a space that manifests the sense of interconnected web of life by re-looking at how we engage with land, water and our surrounding. It shall be a space that demonstrates social and environmental responsibility and the joy in sustainable living systems and the celebration of life.

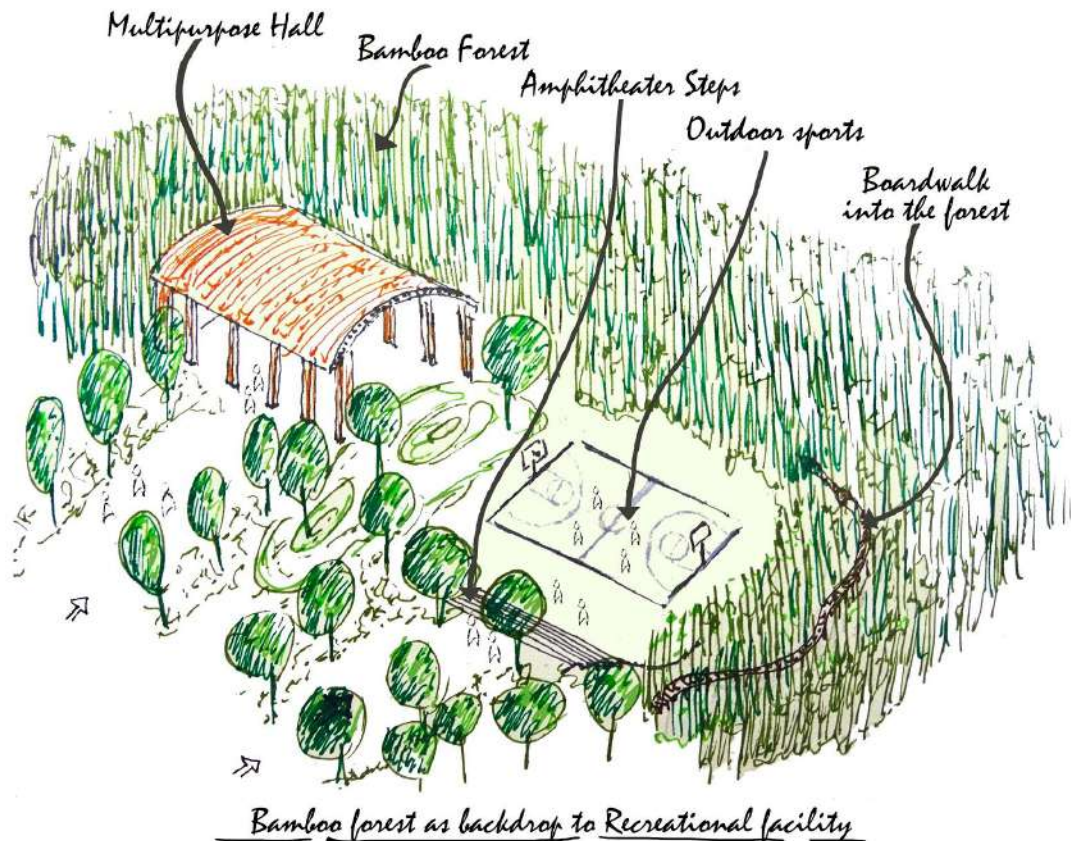
Seeds are sown. It would be a space where seeds are sown for new relationships and ideas. As space that allows for research, experimentation and exchange of thought through honest communication and collaboration. It must engage visitors in plurality in methods of thinking, ways of living and valuing skills in people.

Community building. All our activities on campus, must put in place intent and processes to provide maximum benefit to the community (local or regional) -- socially, environmentally and economically. eArthshala will sow the seeds for catalyst to emerge from the local community, and churn local development by building on what is already present amidst us.



Leverage our unique location. Being at the confluence of Bihar, West Bengal, Sikkim, Assam, Bangladesh, Nepal and Bhutan, we are in a unique position geographically and culturally. Our campus design should be conscious toward this confluence of cultures and geographical merger and transition.

Wow factor. By virtue of being a space that intrigues, informs and inspires, we hope to bring in a paradigm shift in the perception of what is possible in rural Bihar and thus, be an inviting space worth seeing and experiencing by the global community.



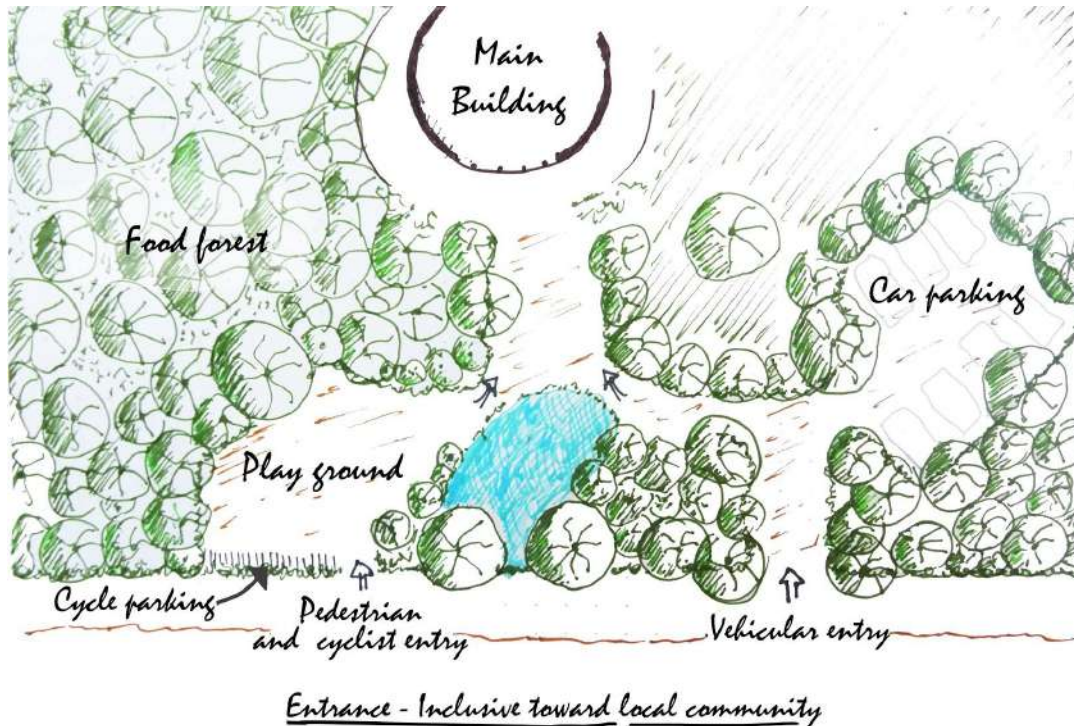
BUCKET LIST OF IDEALISM

Collaboration and Innovation

- Synchronised collaboration with innovators and designers across disciplines
- Constant churning of new ideas and new energies

Impact Assessment

- Documentation of local techniques and lifestyle
- Environmental impact assessment
- Social impact assessment



Design expression

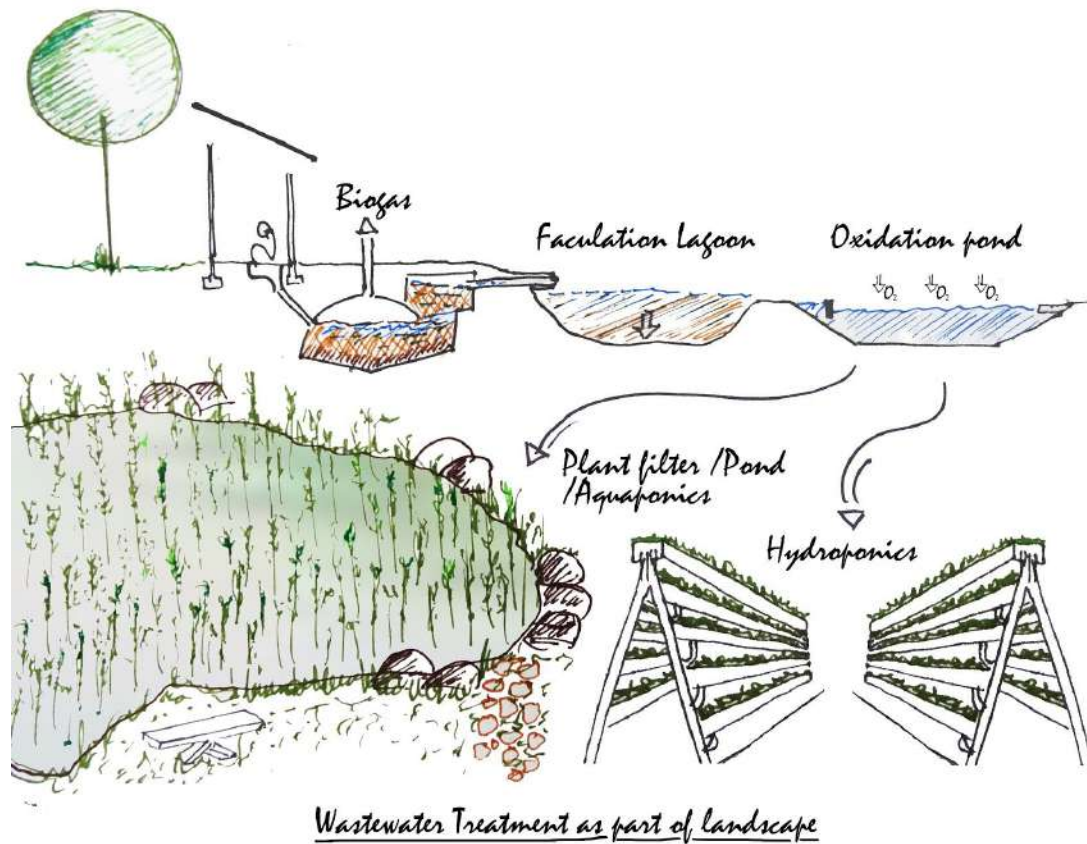
- o Honest expression that intrigues, informs and inspires
- o Bold expression that challenges the status quo and notions of *pucca* house
- o Multi-sensory experience and humane design with constant connection to nature
- o Buildings that tell the story of the builders and of the inhabitant
- o Behavioral change through design
- o Demonstrate highly professional work

Movement through campus

- o Graceful transition between spaces that speak to each other
- o Pause points and social interaction nodes throughout the campus
- o Spaces of peace, quiet, introspection
- o Storytelling through art and art installations

Farm and Land development

- o Permaculture ethics - Earth care, People care and Fair share
- o Continuous interaction between built spaces and landscape
- o Terrace / living roofs and vertical gardens
- o Features that celebration natural elements like rainwater harvesting



Sustainable, closed-loop systems

- o Appropriate eco-sanitation - construction of eco-toilets and bath, including solar geysers and grey/ black water recycling system: Ecosan / Twin Leach pit / DEWATS / SHEFROL / Evaporative transpiration toilet
- o Solid waste management - low cost (educational and interactive) waste segregation system with on campus landfill for unavoidable materials. Move from NIMBY (Not In My Backyard) to IMFY (In My Frontyard)
- o Process and space for handling of construction waste
- o Off grid energy - feasibility / roadmap toward an off grid campus (investment in solar energy etc)
- o Biogas using farm waste and cow dung for our kitchen
- o Watershed management and rainwater harvesting

Design standard

- o Access to all / barrier free design
- o Resources conservation and management (including construction waste)
- o Careful selection of material (including electricals, furniture, acoustics etc) keeping in mind cost and reasonable maintenance

Design technology

- o Multi-hazard friendly
- o Passive design and energy efficiency (solar elevation angle, solatube daylighting systems etc)
- o Building insulation and incorporation of innovative methods of cooling
- o Integrated water and wastewater management
- o Integrate landscape into the built form

- o Living roofs and other methods to achieve zero carbon buildings

Construction techniques (suggestive and not exhaustive)

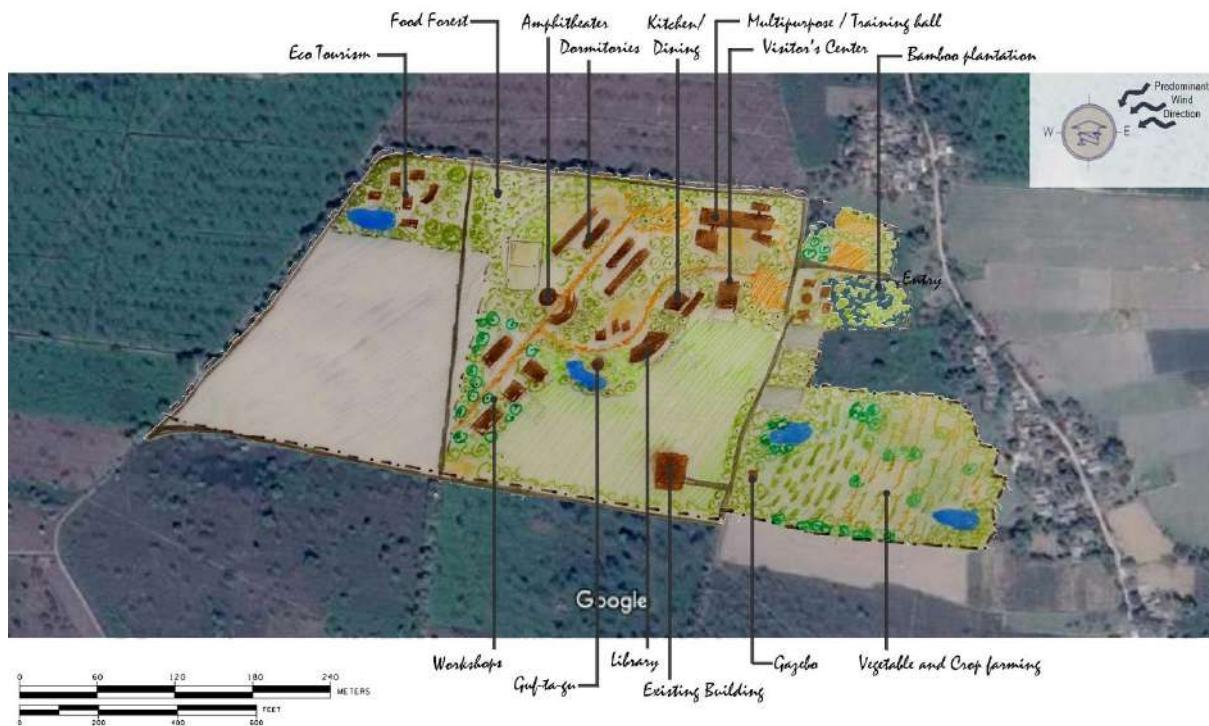
- o Reciprocal frame structures | Hyperbolic paraboloid structures | Archimedean solids | Shell structures | Arches and vaulted structure
- o Wattle and Daub | Cob | Adobe | Rammed Earth | Hollow bricks | Rat trap bond | CSEB | Re-bar rammed and CSEB walls | Structural Insulated Rammed Earth SIRE wall | Filler slab | Earthship | Bahareque
- o Indigenous material | Debris and waste | Waste paper roof | Biomaterials | Mud plaster | Tadelakt lime plaster | Appropriate contemporary finishes

Furniture and other design elements

- o Ergonomically designed furniture that expresses our design philosophy of intent and inspiration
- o Furnishing that expresses a celebration of life

Work environment and training intent

- o Focus on skill, technology and details with skill up gradation of all construction related skills
- o Leadership training
- o Collaborative work culture and joy in making a building, that is for a larger cause
- o Encourage volunteer involvement
- o Workers safety, dignity and fair and transparent compensation



Site plan artistic render. Only to give a sense of scale